

Phospho-mouse ERBB2(S999) Antibody
Affinity Purified Rabbit Polyclonal Antibody (Pab)
Catalog # AP3781f**Specification**

Phospho-mouse ERBB2(S999) Antibody - Product Information

Application	DB,E
Primary Accession	P70424
Other Accession	P06494 , NP_001003817.1
Reactivity	Mouse
Predicted	Rat
Host	Rabbit
Clonality	Polyclonal
Isotype	Rabbit IgG
Calculated MW	138579

Phospho-mouse ERBB2(S999) Antibody - Additional Information**Gene ID** 13866**Other Names**

Receptor tyrosine-protein kinase erbB-2, Proto-oncogene Neu, Proto-oncogene c-ErbB-2, p185erbB2, CD340, Erbb2, Kiaa3023, Neu

Target/Specificity

This mouse ERBB2 Antibody is generated from rabbits immunized with a KLH conjugated synthetic phosphopeptide corresponding to amino acid residues surrounding S999 of mouse ERBB2.

Dilution

DB~~1:500

E~~Use at an assay dependent concentration.

Format

Purified polyclonal antibody supplied in PBS with 0.09% (W/V) sodium azide. This antibody is purified through a protein A column, followed by peptide affinity purification.

Storage

Maintain refrigerated at 2-8°C for up to 2 weeks. For long term storage store at -20°C in small aliquots to prevent freeze-thaw cycles.

Precautions

Phospho-mouse ERBB2(S999) Antibody is for research use only and not for use in diagnostic or therapeutic procedures.

Phospho-mouse ERBB2(S999) Antibody - Protein Information**Name** Erbb2

Synonyms Kiaa3023, Neu

Function Protein tyrosine kinase that is part of several cell surface receptor complexes, but that apparently needs a coreceptor for ligand binding. Essential component of a neuregulin-receptor complex, although neuregulins do not interact with it alone. GP30 is a potential ligand for this receptor. Regulates outgrowth and stabilization of peripheral microtubules (MTs). Upon ERBB2 activation, the MEMO1-RHOA-DIAPH1 signaling pathway elicits the phosphorylation and thus the inhibition of GSK3B at cell membrane. This prevents the phosphorylation of APC and CLASP2, allowing its association with the cell membrane. In turn, membrane-bound APC allows the localization of MACF1 to the cell membrane, which is required for microtubule capture and stabilization (By similarity).

Cellular Location

Cell membrane {ECO:0000250|UniProtKB:P04626}; Single-pass type I membrane protein {ECO:0000250|UniProtKB:P04626} Cell projection, ruffle membrane {ECO:0000250|UniProtKB:P04626}; Single-pass type I membrane protein {ECO:0000250|UniProtKB:P04626} Early endosome {ECO:0000250|UniProtKB:P04626}. Cytoplasm, perinuclear region {ECO:0000250|UniProtKB:P04626}. Nucleus {ECO:0000250|UniProtKB:P04626}. Note=Translocation to the nucleus requires endocytosis, probably endosomal sorting and is mediated by importin beta-1/KPNB1. Also detected in endosome-to-TGN retrograde vesicles. Internalized from the cell membrane in response to EGF stimulation. {ECO:0000250|UniProtKB:P04626}

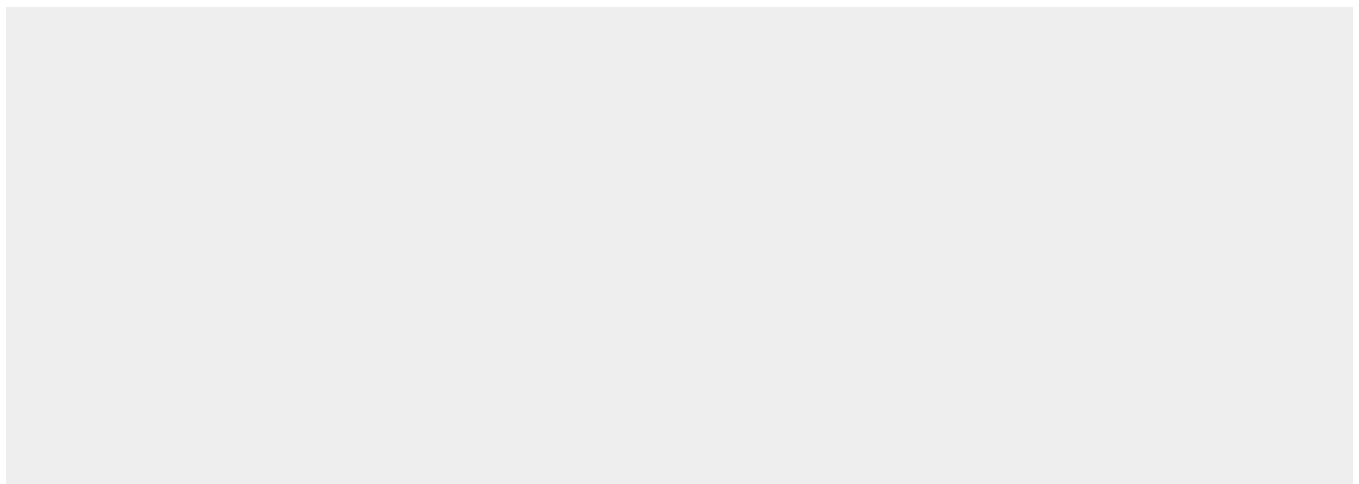
Tissue Location

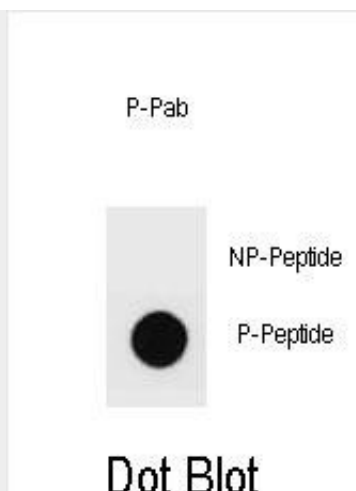
Expressed predominantly in uterine epithelial cells. In the muscle, expression localizes to the synaptic sites of muscle fibers

Phospho-mouse ERBB2(S999) Antibody - Protocols

Provided below are standard protocols that you may find useful for product applications.

- [Western Blot](#)
- [Blocking Peptides](#)
- [Dot Blot](#)
- [Immunohistochemistry](#)
- [Immunofluorescence](#)
- [Immunoprecipitation](#)
- [Flow Cytometry](#)
- [Cell Culture](#)

Phospho-mouse ERBB2(S999) Antibody - Images



Dot blot analysis of Phospho-mouse ERBB2-S999 Antibody Phospho-specific Pab (Cat. #AP3781f) on nitrocellulose membrane. 50ng of Phospho-peptide or Non Phospho-peptide per dot were adsorbed. Antibody working concentrations are 0.6ug per ml.

Phospho-mouse ERBB2(S999) Antibody - Background

This gene encodes a member of the epidermal growth factor (EGF) receptor family of receptor tyrosine kinases. This protein has no ligand binding domain of its own and therefore cannot bind growth factors. However, it does bind tightly to other ligand-bound EGF receptor family members to form a heterodimer, stabilizing ligand binding and enhancing kinase-mediated activation of downstream signalling pathways, such as those involving mitogen-activated protein kinase and phosphatidylinositol-3 kinase. Allelic variations at amino acid positions 654 and 655 of isoform a (positions 624 and 625 of isoform b) have been reported, with the most common allele, Ile654/Ile655, shown here. Amplification and/or overexpression of this gene has been reported in numerous cancers, including breast and ovarian tumors. Alternative splicing results in several additional transcript variants, some encoding different isoforms and others that have not been fully characterized.

Phospho-mouse ERBB2(S999) Antibody - References

Cabodi, S., et al. FASEB J. 24(10):3796-3808(2010)
Johnson, E., et al. J. Biol. Chem. 285(38):29491-29501(2010)
Huck, L., et al. Proc. Natl. Acad. Sci. U.S.A. 107(35):15559-15564(2010)
Chuang, T.D., et al. J. Biol. Chem. 285(31):23598-23606(2010)
Simeone, L., et al. J. Neurosci. 30(19):6620-6634(2010)